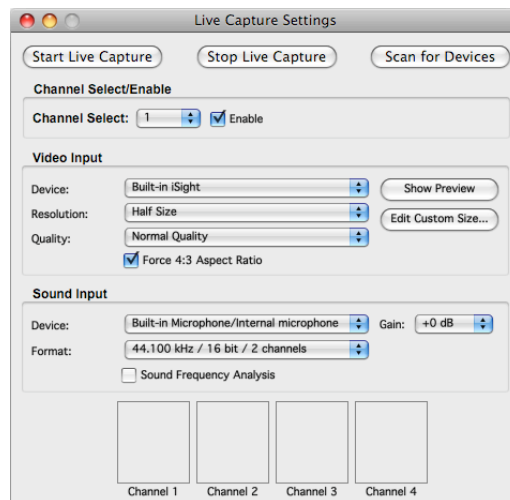


Live Capture Settings Window (v1.3)

As of version 1.3, Isadora can accept live input from up to four video and audio inputs simultaneously. Each of the four channels has its own configuration. The settings for these channels are made using the **Live Capture Settings** window.

- To show the **Live Capture Settings** window, choose **Input > Live Capture Settings**. The window shown below will appear.



Follow the steps below to configure each channel.

Channel Select/Enable

- **Select and enable channel you wish to configure:** Use the **Channel Select** popup to select a channel, and then tick the **Enable** checkbox to enable that channel for live capture.

Video Input Section

- **Select the Video Device:** After connecting and turning on your video capture device, you should select it in the **Device** popup menu. If your device does not appear, try clicking the “Scan for Devices” button and try again. If that fails, check the other channels using the **Channel Select** popup – a device might be “busy” because it is in use by another enabled live input channel, or because it is being used by another application. If none of this works, it simply may be that your device is improperly connected to the computer, or that it is not recognized by the operating system.
- **Select the Video Resolution:** The **Resolution** popup offers several resolution options. **Full Size** will deliver the video input at the maximum resolution offered by the capture device. **Half** and **Quarter Size** will shrink the video to one-half or one-quarter of that maximum. There are also other NTSC and PAL resolutions, which scale the video to the specified size. If you are unsure, use the default setting of **Half Resolution**.

- **Select the Video Quality (MacOS X Only):** The quality setting will effect the quality of the image as well as the amount of CPU power required to acquire the image. Lower quality settings require less CPU power, but degrade the image. The best practice here is to look at the image once it's being shown on the Stage, and find the quality setting that works best for you.
- **Enable/Disable the Force 4:3 Aspect Ratio Option:** Some video sources (notably NTSC-DV) are not delivered in a standard 4:3 aspect ratio. Ticking this checkbox will scale the video to to a 4:3 ratio.
- **Show Preview:** Clicking this button will show a full resolution preview for that video channel. Make sure to close this window after using it, as rendering the video there wastes valuable CPU resources.
- **Edit Custom Capture Size:** See the topic "Setting a Custom Capture Size" on page for more information on the Custom Capture Size Feature.

Audio Input Section

- **Select the Audio Device:** The **Audio Input** section allows you to configure the audio input device for that channel. To select a device, choose it from the **Device** popup menu. If you are using an external device, and it does not appear in the menu, ensure it is turned on and properly connected to computer. Then try clicking the "Scan for Devices" button and look for your device in the popup menu.
- **Select the Audio Format:** Once you have selected a device, the available audio formats for that device will appear in this menu. These vary from device to device, but since Isadora's live audio input is used only to feed the Sound Level Watcher and/or Sound Frequency Watcher actors, you simply must decide a reasonable quality to allow those actors to work well. A best practice choice would be 44.1 kHz / 2 Channels / 16 Bit if is available. Choosing high sampling rates (e.g., 96 kHz and above) is probably overkill for this setting.
- **Enable/Disable Sound Frequency Analysis:** If you would like to use the Sound Frequency Watcher actor to manipulate other actors based on the Frequency Content of the live audio input, you will need to check the **Sound Frequency Analysis** checkbox. If you are not using the Sound Frequency Watcher, then you will want to leave this box unchecked to save CPU resources. Once this option is enabled, you can view the frequency content of the incoming audio using the Status Window, which is can be shown by choosing **Windows > Show Status**.
- **Select the Gain adjustment:** If the audio input is too loud or too soft, you can use the **Gain** popup to decrease or increase the volume of the incoming sound. (Positive values [e.g, +6 dB) increase the amplitude, negative values decrease it.) Refer to the "VU" meters at the bottom of the window to get a good range.

Starting/Stopping Live Capture

From the Live Capture Settings Window

- To start live capture from the Live Capture Settings window, click the “Start Live Capture” button.
- To stop live capture from the Live Capture Settings window, click the “Stop Live Capture” button.

From the Main Menu

- To start capturing video and audio, choose **Input > Start Live Capture**.
When you do, Isadora will attempt to start capturing both video and audio on all enabled channels.
- To stop capturing video and audio, choose **Input > Stop Live Capture**.